

MIGORI COUNTY POPULARITY SURVEY



infotrak

Research & Consulting

For clarification and information on other counties, please contact:

Mary Mburu: +254 728 017 518

Email: mary.mburu@infotrakresearch.com

Raphael Mulwa +254 736 360 964

Email: raphael.mulwa@infotrakresearch.com

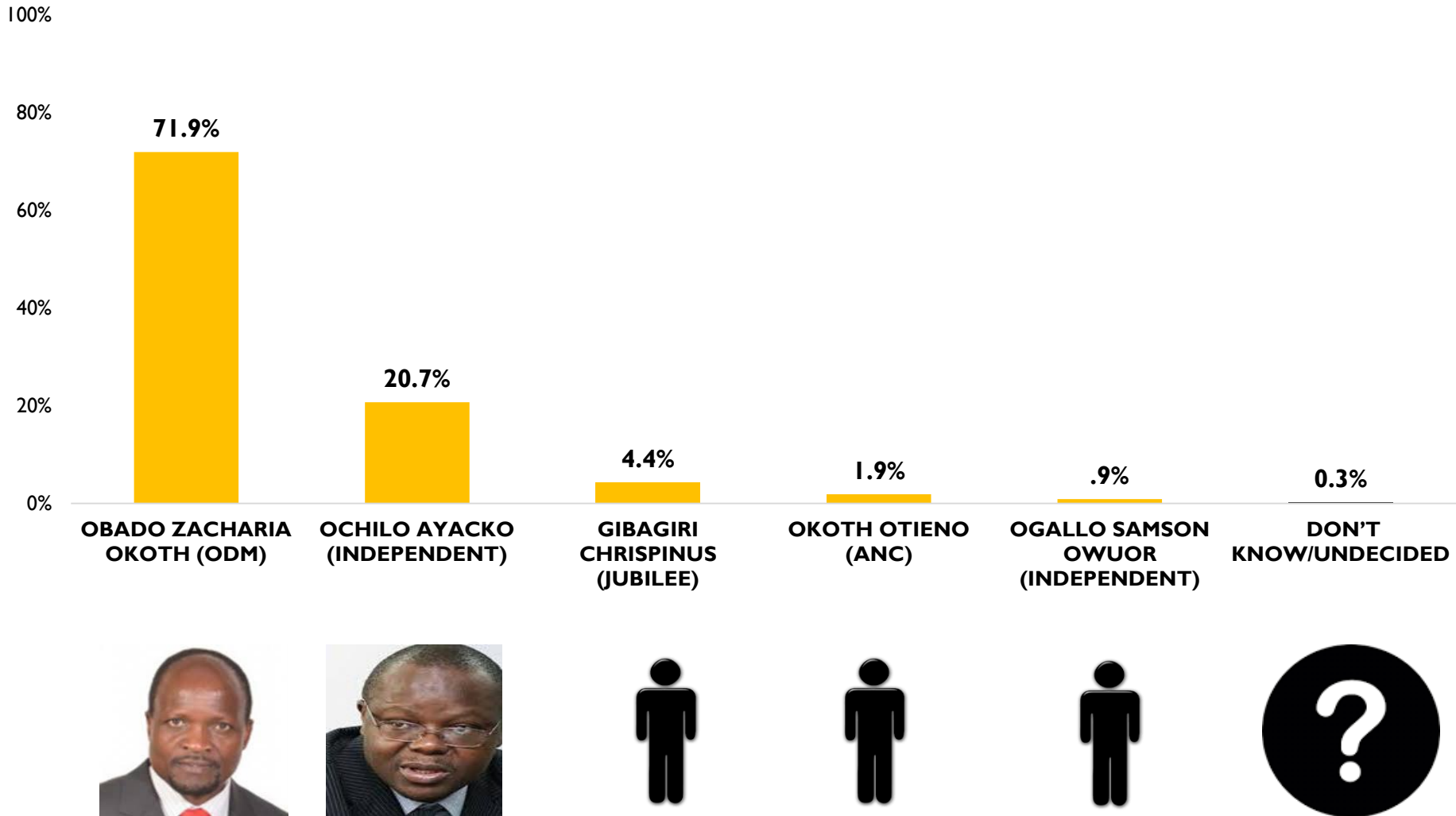
Who sponsored the poll?	This is a syndicated Infotrak Poll and was as such sponsored and conducted by Infotrak Research and Consulting
When was the poll conducted?	Between 10 th to 15 th July 2017
How was the poll conducted?	Face to Face, household interviews through Computer Assisted Personal Interviews (CAPI)
What was the sample size?	A sample of 1200 respondents was interviewed to represent Migori County registered voters of 388,633. The poll covered 8 constituencies and 40 wards of Migori County,
What was the margin of error?	3.0 at 95% degree of confidence
How was the sample designed?	Using the IEBC voter register, the sample was designed using Population Proportionate to Size (PPS).
Data Analysis	Data was processed and analyzed using SPSS 21

SAMPLE DISTRIBUTION

Sub County	Wards Covered	Sample (N)	Proportion (%)
RONGO	NORTH KAMAGAMBO	149	12
	CENTRAL KAMAGAMBO		
	EAST KAMAGAMBO		
	SOUTH KAMAGAMBO		
AWENDO	NORTH SAKWA	149	12
	SOUTH SAKWA		
	WEST SAKWA		
	CENTRAL SAKWA		
SUNA EAST	GOD JOPE	144	12
	SUNA CENTRAL		
	KAKRAO		
	KWA		
SUNA WEST	WIGA	142	12
	WASWETA II		
	RAGANA-ORUBA		
	WASIMBETE		
URIRI	WEST KANYAMKAGO	160	13
	NORTH KANYAMKAGO		
	CENTRAL KANYAMKAGO		
	SOUTH KANYAMKAGO		
	EAST KANYAMKAGO		

Sub County	Wards Covered	Sample (N)	Proportion (%)
NYATIKE	KACHIEN'G	190	16
	KANYASA		
	NORTH KADEM		
	MACALDER/KANYARWANDA		
	KALER		
	GOT KACHOLA		
KURIA WEST	MUHURU	158	13
	BUKIRA EAST		
	BUKIRA CENTRL/IKEREGE		
	ISIBANIA		
	MAKERERO		
	MASABA		
	TAGARE		
KURIA EAST	NYAMOSENSE/KOMOS OKO	109	9
	GOKEHARAKA/GETAMB WEGA		
	NTIMARU WEST		
	NTIMARU EAST		
	NYABASI EAST		
	NYABASI WEST		
Total		1200	100

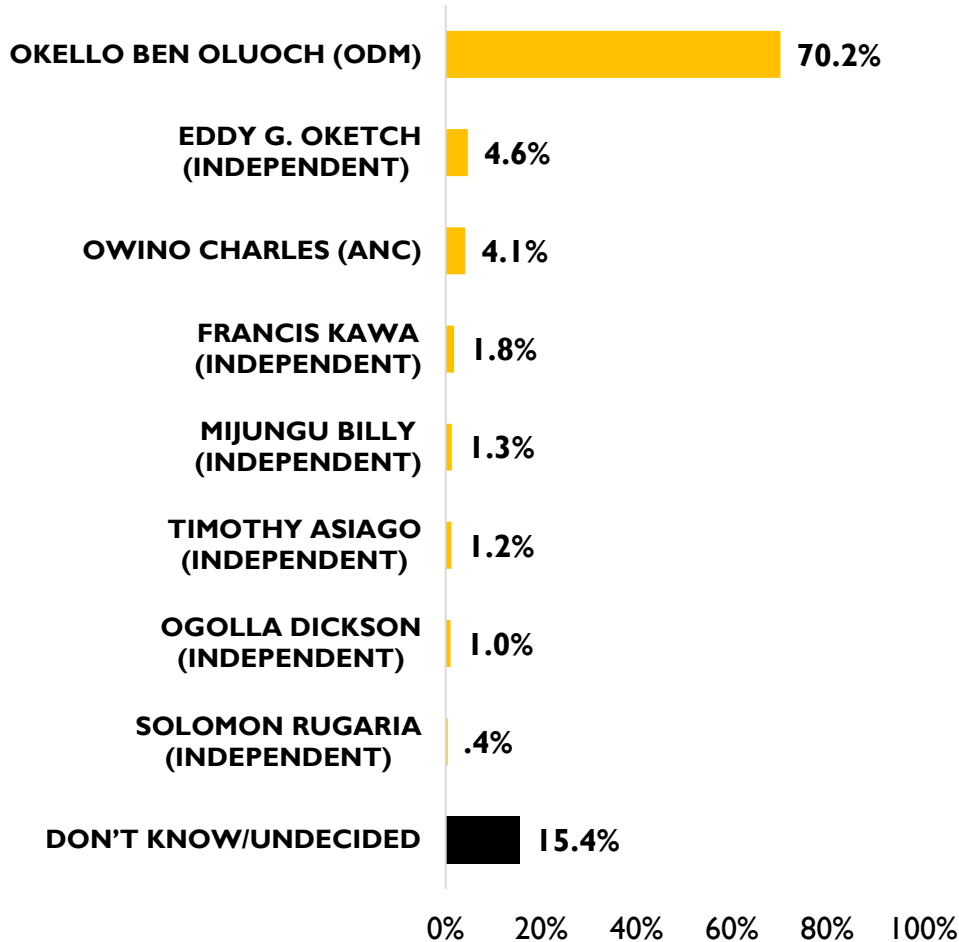
SURVEY FINDINGS



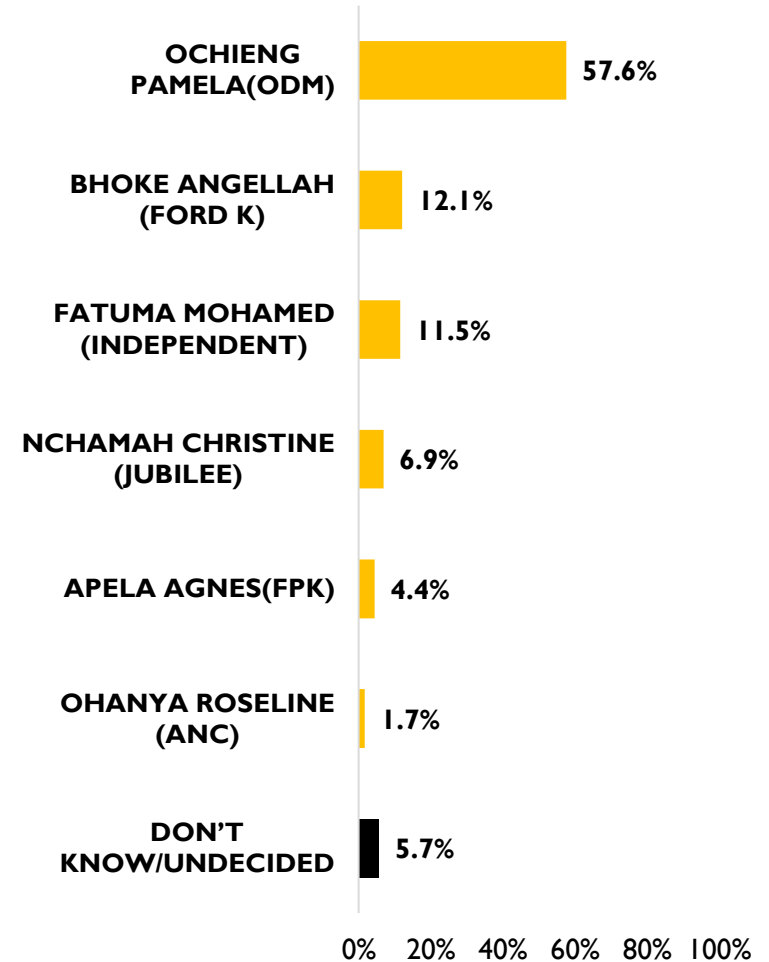
Assuming the elections for Migori Governor were to be held today, which candidate would you vote for?

N=1200

MIGORI SENATOR



MIGORI WOMAN REP



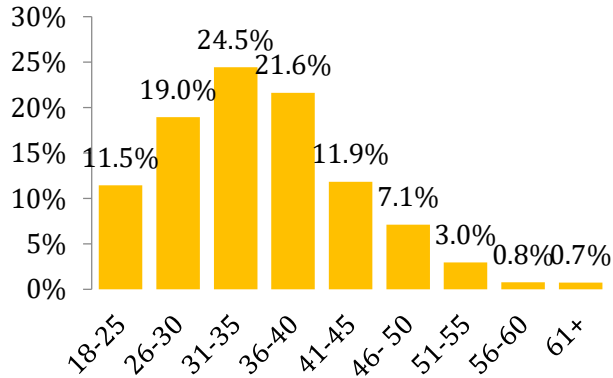
Assuming the elections for Migori Senator were to be held today, which candidate would you vote for?

N=1200

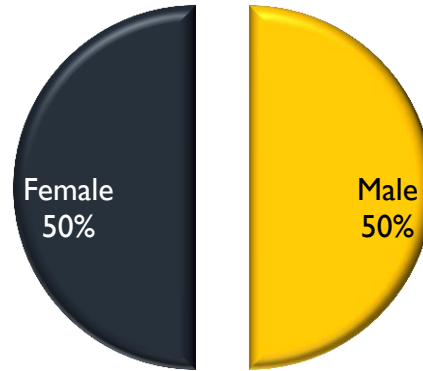
Assuming the elections for Migori Women Representative were to be held today, which candidate would you vote for?

SURVEY DEMOGRAPHICS

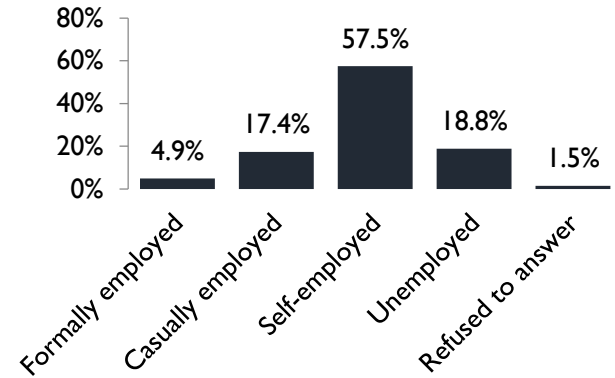
Age



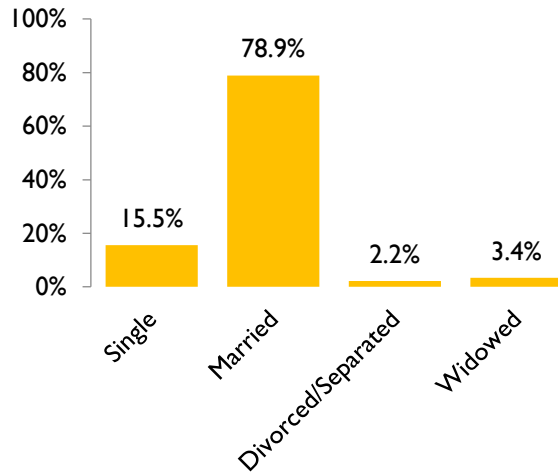
Gender



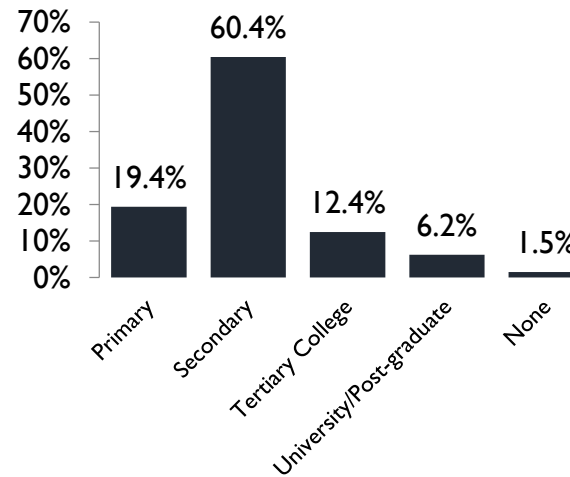
Employment



Marital Status



Level of Education



Religion

